



It is at the garage.

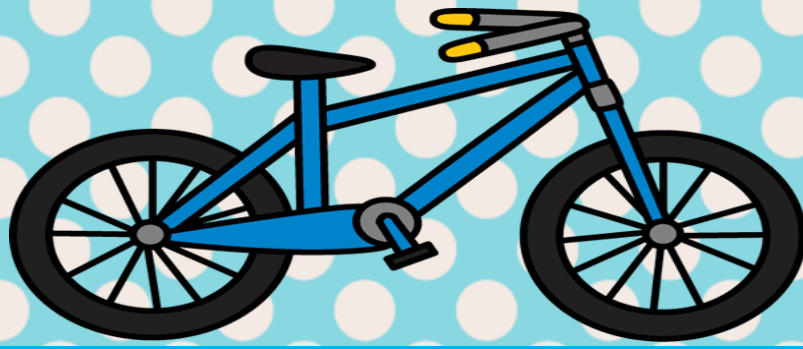
Where is the car?



It is at the bus stop.



Where is the bus?



It is in the garden.



Where is the bike?



It is at the station.

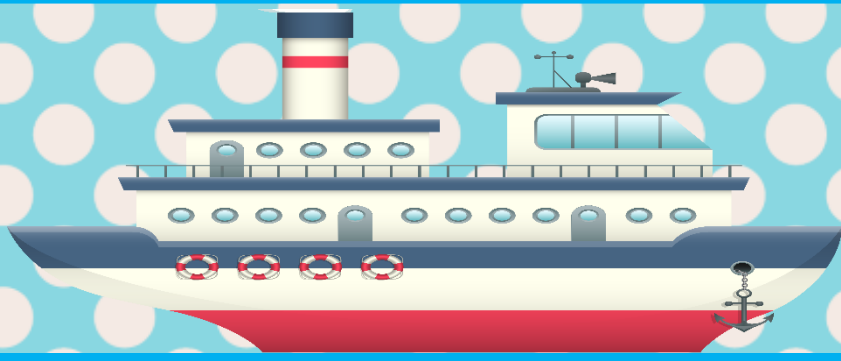
Where is the train?



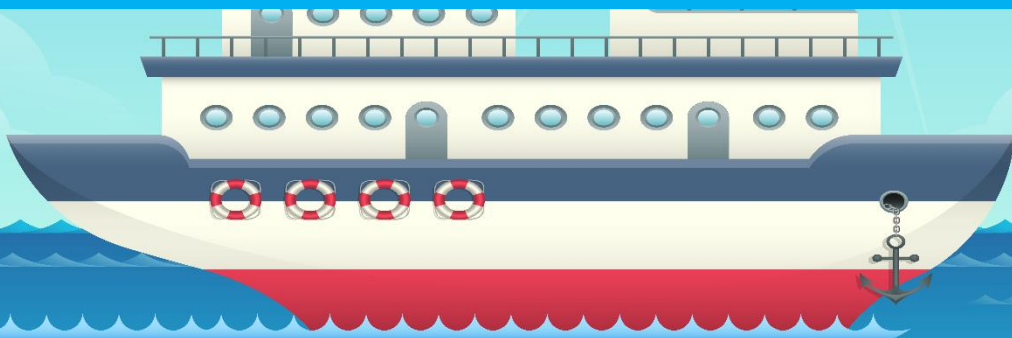
It is on the river.



Where is the boat?



It is on the sea.



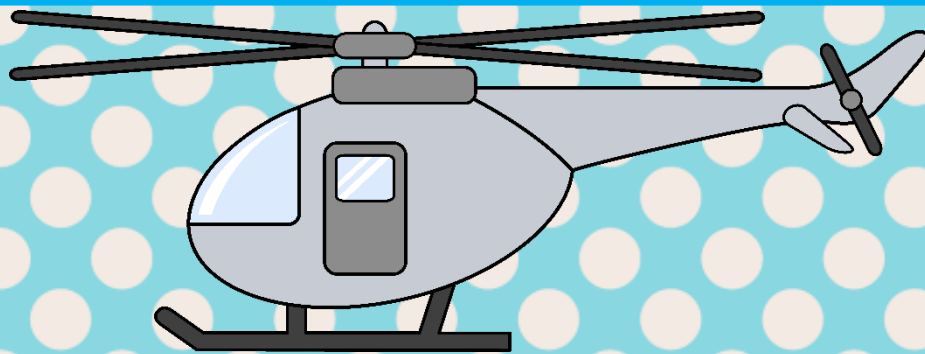
Where is the ship?



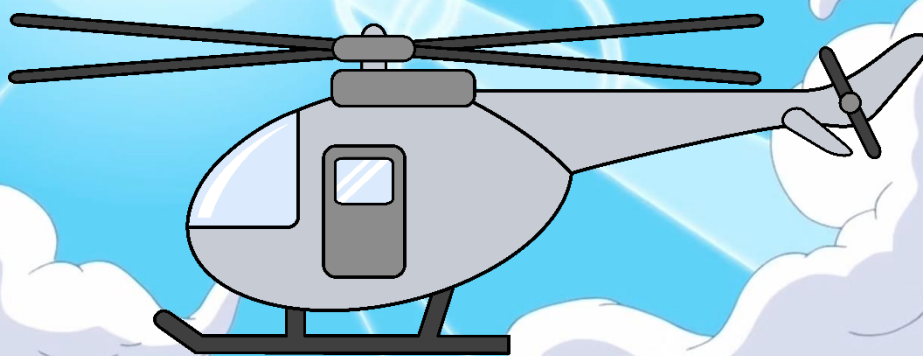
It is on the road.



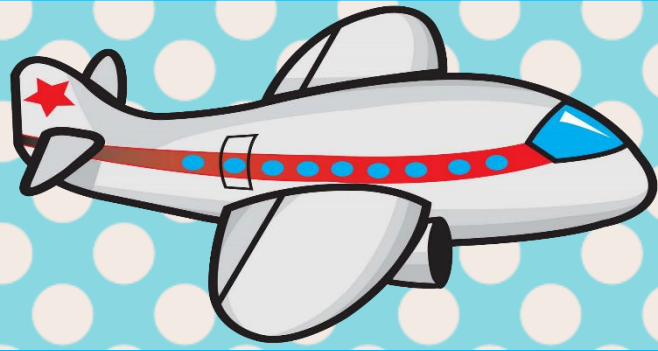
Where is the motorcycle?



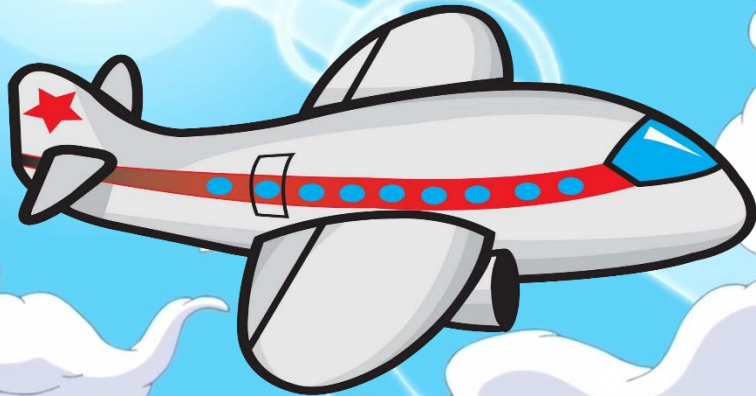
It is in the air.



Where is the helicopter?



It is in the air.



NEW EPISODE

Where is the plane?